

1054 HOUSE

AWB ENGINEERING

9/22/09

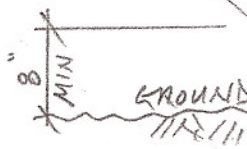
2x6 CRIPPLE
WALL W/ SHEAR WALL
SHEATHING PER
FLOOR ABOVE

(2) #4 FULLY GROUTED
BOND BEAM

REMOVE (E) CMU
PER CONTRACTOR'S
OPTION

(2) #5 FULLY GROUTED
CMU CELL AT POSTS
& HOLDOWNS AND
ADJACENT CMU CELLS
(6) #5 & (3) CMU CELLS
TOTAL AT EACH POST
& HOLDOWN)

(2) #4 FULLY GROUTED
C 30" O.C. ELSEWHERE



6" CONC
WALL

#4 @ 15" O.C.
HOOK AS SHOWN

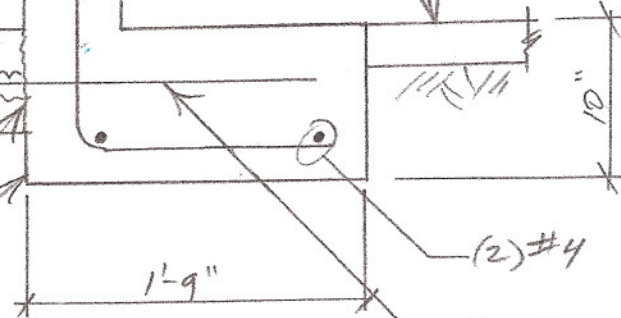
(E) SLAB-ON-GRADE,
SAW CUT FOR
FOOTING INSTALL

(E) CMU WALL

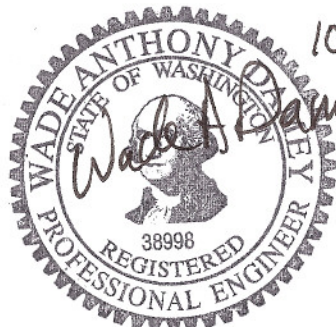
(E) CONCRETE
FOOTING

SAW CUT & SURFACE
ROUGHEN (E) FOOTING

CONCRETE WALL &
WALL FOOTING



#4 @ 18" O.C.
DOWEL DRILL
& EPOXY W/ MIN.
5" EMBED.



10.7.09

EXPIRES 5/12/2012

SK2 - ALTERNATE SOUTHERN BASEMENT

CMU & CONCRETE WALL FOOTING

NTS